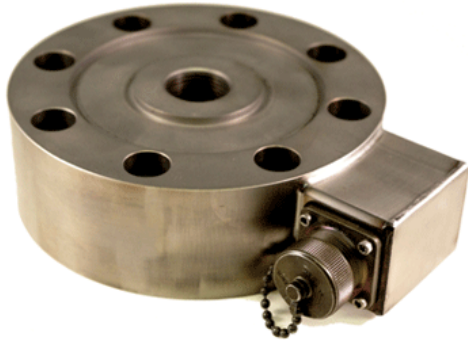


Universal Load Cell

Sensorwerks



Model 141

- Ranges from 0-5 lb to 0-50,000 lbs with calibrated Positive output in Tension
- All-Welded 17-4PH Stainless Steel Construction
- High resistance to off-axis forces

Shear Web Low Profile. The Model SW41 is a precision load cell designed for tension operation. Calibration supplied with output in Tension. Accessory base plates available for Center thread attachments. Counterbored mounting holes for flush installation. Optional electrical terminations include quick disconnect connectors.

Specifications

Load Ranges	0-5 lbs ~ 50,000 lbs
Deflection	Contact Factory
Linearity	+/- 0.2% FS
Hysteresis	+/- 0.075% FS
Repeatability	+/- 0.03% FS
Sensitivity / Output	5-25 lbs : 2 mv/v +/- 0.5% FS 50-50,000 lbs : 3mv/v +/- 0.5% FS
Resolution	Infinite
Overload	150% Range
Zero Setting	+/- 1 % FS Output
Calibration	Plus output in Tension
Temperature, Operating	-65° F to +250° F
Temperature, Compensated	60° to 160° F
Thermal Error, Zero	0.002% FS/° F
Thermal Error, Span	0.002% Reading/° F
Strain gage Type	Metal Foil
Excitation (Calibrated)	10 VDC
Insulation Resistance	5000 megohm @ 50vdc
Bridge Resistance	350 Ohms Nominal

Shunt Calibration Data	Included
Weight	≈ 1.5 lbs
Material	17-4 PH Stainless Steel
Electrical connection 5 to 5000 lb PTH-10-6P, 2500 to 50,000 lbs MS3102E-14P-6P. Mating connection not included.	

Ranges Pounds	OD Inches	Height Inches	# Mtg Bolts	Bolt Circle	Bolt Size	CenterThread	Electrical Box Dimensions	Dimension
5, 10, 25	2.5	0.8	6	2.0	#8	1/4-28UNF-2B	Extends 0.82" x 3/4" Ht 1.25" long	2.50" OD 0.8 Ht
50, 100, 500, 1k	3.0	1.0	6	2.25"	1/4"	3/8-24UNF-2B	Same	3.0" OD X1.0 Ht
2000 & 5000	3.5	1.0	6	2.625	5/16"	1/2-20UNF-2B	Same	3.00" OD X1.00 Ht
10,000	5.5	1.8	8	4.5	3/8"	1.14UNS-2B	1.25" x 1.5" x 2.0	5.50" OD X 1.80 Ht
20,000 & 50,000	6.0	1.8	8	4.875	1/2	1-1/2-12UNF-2B	Same	6.0" OD X 1.80 Ht

Note : Dimension change with high output options.