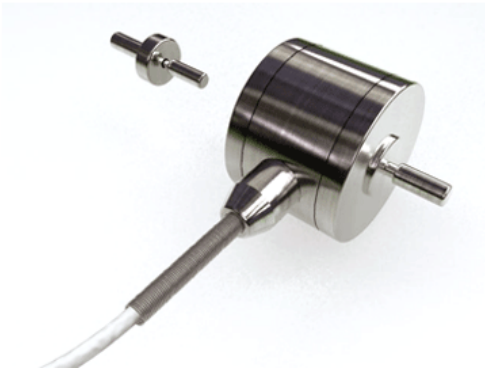


Miniature Load Cell (Tension and Compression)

Sensorwerks



Model 131

- 5 lb to 1000 lb
- All-Welded Stainless Steel
- Calibration in Tension and Compression
- Bonded Strain Gages

The Model 131 has an internal beam type of sensing element with welded stabilizing diaphragms to minimize off axis loading errors. The top mounting stud on the low ranges is removable with optional thread sizes.

Specifications	
Load Ranges	5 lb to 1000 lb
Ranges / Dimensions	5 –10 lb 3/4" OD x 0.46" High with a 6-32 Thread 25-100 lb 1" OD x 1/2" High with a 10-32 Thread 250-1000 lb 1" OD x 1/2" High with a 1/4-28 UNFC Thread
Deflection	0.001" at full scale (Contact factory for details)
Resonant Frequency	34 to 55 kHz depending on range
Non-Linearity & Hysteresis	+/- 0.15 % FS 5-250 lb Ranges +/- 0.5 % FS 500-1000 lb Ranges
Non-Repeatability	+/-0.05 % FS All Ranges
Sensitivity / Output	2 millivolts/Volt All Ranges
Resolution	Infinite
Overload	150% Range
Zero Setting	2% FS
Temperature, Operating	-65F to +250F
Temperature, Compensated	70-170F
Thermal Error, Zero	0.005% FS/°F
Thermal Error, Span	0.005% Reading/°F
Strain gage Type	
Excitation (Calibrated)	5.0 Vdc(max 10 Vdc Ranges above 25 lbs)
Insulation Resistance	>5000 megoohms

Bridge Resistance	350 Ω
Weight	1 1/2 Ounces
Standard Cable: 5 ft Integral TFE jacketed, four conductor, color coded, shielded cable	