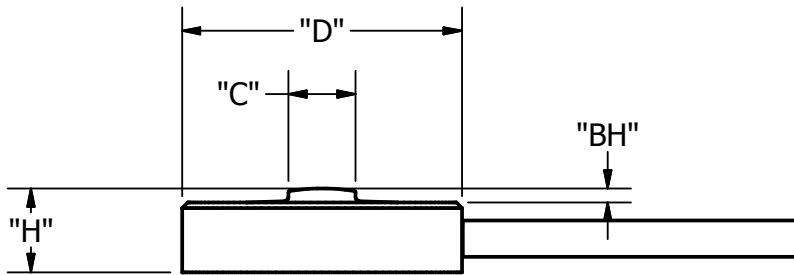


MODEL 113				
CAPACITY	"H"	"D"	"C"	"BH"
5 TO 50	.125	.375	.09	.025
100 TO 250	.15	.500	.12	.03
500	.25	.750	.25	.035

WIRING CODE	
COLOR	FUNCTION
RED	+ INPUT
BLACK	-INPUT
WHITE	+ OUTPUT
GREEN	- OUTPUT



Model 113

Miniature Compression Load Cell

**Sensor**werks