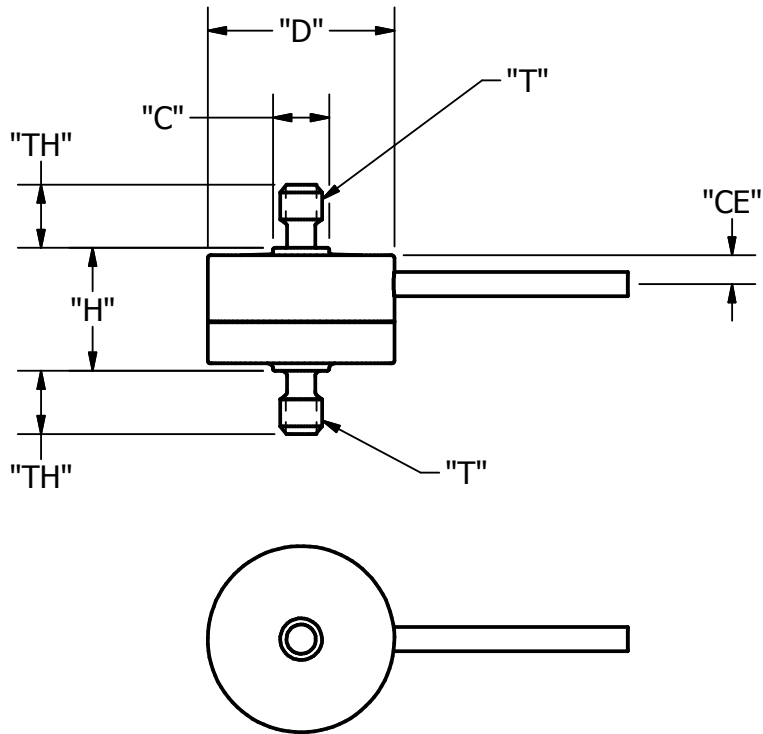


COMPACT TENSION/ COMPRESSION MODEL 111						
RANGE LBS	"D"	"C"	"H"	"T"	"TH"	"CE"
5 TO 100	.50	.15	.29	4-40 UNC	.19	.08
100 TO 500	.75	.39	.375	1/4-28 UNF	.313	.10



WIRING CODE	
COLOR	FUNCTION
RED	+ INPUT
BLACK	- INPUT
WHITE	+ OUTPUT
GREEN	- OUTPUT

Model 111

Miniature Tension/Compression Load Cell

Sensorwerks