

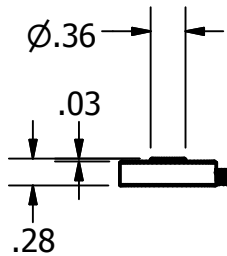
5 feet 4 conductor
30 ga PTFE insulated
connection cable
w/3" flying leads

Ø1.00

Ø.20

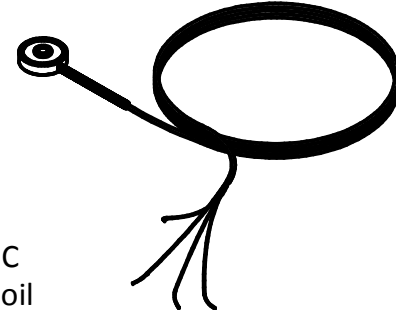
WIRING CODE

RED + SUPPLY
BLACK - SUPPLY
GREEN - OUTPUT
WHITE + OUTPUT



Performance

Accuracy +/- 1.0 % full scale
Resolution infinite
Calibration 5-point calibration: 0; half scale; full; half scale; 0
Output 2 mV/V Nominal
Operation Compression



Electrical

Excitation voltage 10.0 VDC
Strain gage type Bonded Foil
Insulation resistance > 5000 mega ohm @ 50 VDC
Bridge resistance 350 ohm
Electrical termination 5 foot 30 ga. 4 conductor PTFE jacketed cable

Environmental

Operating Temp -30 °F to 250 °F
Compensated temp 60 °F to 160 °F
Temp Effect on Span .010 % reading /°F
Temp effect on zero .005 % full scale/°F

Mechanical

Case Material 17-4 SS
Weight Approx. 4 ounces

<small>PROPRIETARY RIGHTS NOTICE: THIS DRAWING COVERS A PROPRIETARY ITEM AND IS THE PROPERTY OF SENSORWERKS THIS DRAWING IS NOT TO BE COPIED OR USED WITHOUT THE PERMISSION OF SENSORWERKS.</small>					
<small>UNLESS OTHERWISE SPECIFIED: ALL DIMENSIONS IN INCHES</small>		<p align="center">Sensorwerks 4097 LEAP ROAD HILLIARD, OHIO 43026</p>			
MATERIAL SPECIFICATION		.X ±.1	<p align="center">MODEL DT 0-25 THRU 0-100 LBF</p>		
		.XX ±.01			
		.XXX ±.005	<small>DRAWN BY: jp DATE: 6/14/2016</small>	<small>CHECKED BY: DATE:</small>	<small>DESIGNED BY: jp DATE: 6/14/2016</small>
		SCALED TO FIT	SHEET	SIZE	DOCUMENT NUMBER
		1 OF 1	A	161-0203-00	